

Sprotbrough & Cusworth Parish News

Published by Sprotbrough & Cusworth Parish Council
Printed on recycled paper

Winter 2013/14

Do we need a Neighbourhood Plan?

WOULD you like to help shape the future look of Sprotbrough and Cusworth?

The Government wants local people to have a greater say in the development of the area where they live and the Localism Act 2011 allows communities to capture their thoughts and

aspirations in a document called a Neighbourhood Plan.

Although Doncaster Council has not identified any major sites within Sprotbrough and Cusworth for residential growth, the parish council is keen to see if residents would like to help create a Neighbourhood Plan to cover the land within the parish boundary.

In simple terms, a Neighbourhood Plan would be a community-led collection of 'dos and don'ts' that, once agreed, would become a toolkit for guiding future development and regeneration in our parish. See page 3.

It may, for example, set out some aims for the parish, such as proposed sites for residential, commercial and industrial development. It could also capture any heritage or conservation wishes. It would have to comply with both UK and European legislation as well as various national and local authority planning policies.

A Neighbourhood Plan could be a useful tool to determine the future look of the area where you live. However, it could not propose less development than what is already identified in Doncaster Council's strategic development plan.

For this idea to progress, a wide cross section of community representatives would need to be involved. People who live or work in the parish would need to join a steering group, which would be responsible for developing the Neighbourhood Plan, supported by representatives of the parish council. Membership of the steering group could include local schools, business and community organisations. It would require a lot of work but the key benefit would be that it would have a formal statutory role and would have to be referred to when Doncaster Council made planning decisions.

Extensive and varied community consultation must be undertaken before a Neighbourhood Plan can be progressed. It has to be driven by the community and independently examined when completed. Some grant funding may be available to cover costs but any shortfall would have to be met by the parish council. Initially, we would like to hear from anyone who would be interested in working to develop a Neighbourhood Plan for Sprotbrough and Cusworth. Please contact either your local parish councillor or the parish council office. Contact details are on the back page.

LOCK BEHIND THE SCENES

EVERY winter the Canal & River Trust takes advantage of the reduced traffic on the waterways network and carries out a programme of maintenance. As part of a lock gate replacement to Sprotbrough Lock in February 2014 the Trust is inviting members of the public to a behind the scenes look to see the work required to protect your 250 year old waterway network.

This incredible feat of engineering on the Sheffield & South Yorkshire Navigation will give the public the chance to venture into the massive 250ft long lock, walk along the lock bottom, as well as putting questions to Trust experts about how this skilled operation is carried out. This is the first time a lock open day has been held in South Yorkshire so join the Trust for a unique view into waterways life and support their preservation work. Date for your diary is **Sunday 16 February**. Check www.canalrivertrust.org.uk for more details nearer the time and check out our fuller feature on the locks in the next issue.



Wishing you a very Merry Christmas
and a Happy and Peaceful 2014

ANOTHER BUSY YEAR

COUN Pat Haith outlined the parish council's activities last year in the Chair's 2012/13 annual report, presented at the June meeting.

// Sprotbrough and Cusworth Parish Council serves a population of nearly 12500 residents, who live in Cusworth, Scawsby and Sprotbrough. There are 17 elected parish councillors, known as members, who represent different areas of the parish, defined as wards. All elected members are volunteers and unpaid for the work they do in the community.

The parish council employs eight staff who are responsible for the administrative running of the council and the care and maintenance of the Goldsmith Centre, sports pavilions and skate park.

We publish Sprotbrough & Cusworth Parish News three times a year and run a website. The newsletter is distributed to over 5000 homes, helping to keep the community in touch with the council's activities. The website address is www.sc-pc.co.uk.

The skate/BMX park on Anchorage Lane continues to be an extremely popular facility and is used by young people from both within the parish and throughout Doncaster and the wider region. Two on site activity days were organised during the year, one in partnership with South Yorkshire Cycling Safety Group to promote safer BMX riding and cycle maintenance and care.

The Goldsmith Community Centre hall is in daily use and a range of community groups and various exercise classes are held regularly along with other activities, ranging from a mother and toddler group to various older people groups.

The Age UK charity hire the centre on Wednesdays, providing transport, a cooked lunch and social activities for residents. The building is also a base for the Methodist Church and, in addition, various fund raising charity events and various other celebrations are hosted throughout the year. Children's parties also regularly take place at the centre, with the adjoining small children's play area being utilised.

The committee room is also used regularly by various groups for meetings and functions, including a painting class that produce work of a very high standard and Sprotbrough Ladies' Circle, who make a range of craft work to raise funds for several charities.

The gardeners' store, located at the rear of the Goldsmith Centre, had been run by volunteers from the Gardeners' Society and had flourished for over 25 years. Sadly, volunteer numbers dwindled and very reluctantly the society ceased operating in September 2012.

The parish council, along with Brodsworth Parish Council, fund and manage Scawsby Community Centre which, like the Goldsmith Centre, is heavily used by hirers.

Similarly, the four recreation sites owned by the parish council are enjoyed and used informally for a variety of activities by residents of all ages.

The 2012/13 football season again saw all parish pitches being fully utilised.

The parish council opposed the decision by Doncaster Council to close Sprotbrough Library and supported the charity based volunteer group formed to run a library service in Sprotbrough. We have representation on the library management committee and further supported the group by awarding a grant of £2,500 at the end of 2011/12

We continue to promote and support the work of various local organisations, including Scouts, Sprotbrough Music Society and the Don Gorge Group.

Regular donations have been made for the benefit of community groups and charitable organisations with £2,240 in grants being awarded to various groups during the past year.

Elected members represent the parish council on a range of bodies and organisations, including various committees within Doncaster Council.

We prioritise our role as a statutory consultee of Doncaster Council Development Control Committee by monitoring, evaluating and commenting on the appropriateness of all planning applications that fall within the parish, and by supporting parishioners' views and comments as appropriate.

A Neighbourhood Planning Group has been formed with representation from the parish council and other community organisations. This group will look at the character and nature of our communities from a planning perspective with reference to conservation and environmental issues.

Electors continue to show their interest in the work of the parish council by either regular direct contact with members, their attendance at our meetings or through the parish council office.

In the financial year ending March 2013 a precept of £157,728.00 was levied.

A sustainability grant of £1,560 was awarded by Community Spaces for the Adventure Playground at New Lane. This money paid for an activity day on site, themed as 'user ownership' to support the principle of keeping the park safe and tidy.



Coun Pat Haith

An additional £6,195 was spent on final project retention monies and safety surface materials.

Parish council staff who are responsible for initial equipment safety inspections took part in a training day delivered by Rospa.

As part of our ongoing programme of upgrade and maintaining the facilities and buildings, the Goldsmith Centre had a new energy efficient boiler installed at a cost of £5,600 to serve the kitchen and main hall area.

The Parish Council contributed £12,500 towards the operating costs of the Scawsby Community Centre for the year.

Elected members continued to maintain a watchful eye on budgets whilst exercising prudent management of the parish council finances during the year. At the close of the financial year, the parish council's fixed assets exceeded £1.3 million.

Our general reserve balances at the year-end were £207,797 and some £6,500 in VAT payments were reclaimed from the Government. A rigorous internal and external audit regime thoroughly monitors our legal and financial compliance. The internal auditor, who visits quarterly, has asked again that his satisfaction with the financial record keeping be publicly recorded.

Similarly, no outstanding issues were raised by the external auditors.

I would like to thank all my colleagues, past and present, for their hard work and contribution to our community. //

PARISH COUNCIL FUNDED PCSOs *what do you think?*

SOUTH Yorkshire's Police and Crime Commissioner, Shaun Wright, is offering a 'pound for pound' deal to local councils (parish and town councils) to fund the employment of PCSOs (police community support officers), who would primarily be tasked to support the parish area.

PCSOs are not traffic wardens but the focus of their role is to address anti-social behaviour. They have powers to issue fixed penalty fines for matters such as littering, confiscate alcohol and send under 16s home if they are breaking a curfew order.

It is expected that the approximate additional annual cost that would be added to the parish rates would be less than £10.00 per household per year. The parish council would like to explore this matter further and Commissioner Wright will be attending the parish council meeting on Thursday 20 February 2014 at the Goldsmith Centre Sprotbrough Road Sprotbrough at 7pm.

If you have any views on this issue the parish council would like to hear from you. Please contact any of your parish councillors - details on the back page - or telephone our office on **(01302) 788093**; write to us at Sprotbrough & Cusworth Parish Council, Goldsmith Centre, Sprotbrough Road, Sprotbrough, Doncaster, DN5 8BP or email us at sprotcuspc@btconnect.com

Special Feature - local planning matters

Neighbourhood Planning

A LOCAL working group, with a representative from the parish council, is currently looking at Neighbourhood Planning across Sprotbrough and Cusworth.

As discussed on page 1, creating a Neighbourhood Plan provides an opportunity and rights for local people to help shape planning development within their area. When such a plan is in place it enables communities to protect their area, choosing where they want any new homes, shops and offices to be built. A Neighbourhood Plan empowers local people to have their say on what new buildings should look like and what infrastructure should be provided.

The process of developing a Neighbourhood Plan is detailed and needs to link into national and local planning authority policies. It cannot be used to block the development of new homes and businesses; its role is to influence where they should be built and what they should look like.

Jane Stimpson from Doncaster Council is giving advice to the Parish Council on this subject.

Recent planning applications

Sprotbrough & Cusworth Parish Council receive details from Doncaster Council of planning applications that fall within the parish area and we can make comments as appropriate.

The Parish Council has recently responded to Doncaster Planning Authority about an application for an unspecified type of secure residential institution, including a 3.9m high security fence, on land adjacent to Jewson's at Barnsley Road, Scawsby. Parish councillors raised a number of objections to this application including the

inappropriateness of the location for such a facility in a residential area and the proximity of a local junior school. Doncaster Council has received many other objections to this application and, as Sprotbrough & Cusworth Parish News went to press, had not made a decision on the application.

Doncaster Council's three Great North Road Ward councillors - Debbie Hutchinson, Bill Mordue and Kevin Rodgers - also oppose the application, saying the site currently has planning permission for a residential institution for retired residents. They say a change of use to a secure residential institution would change the nature of activities that take place within our community.

Another recent application the parish council commented on centres on the demolition of a bungalow on Sprotbrough Road, with a proposal to build several properties on the site. Parish councillors have supported local residents' objections to this outline planning application and also requested and attended a site meeting with a representative from Doncaster Council. Although Doncaster Planning Authority has approved the outline planning application it is parish council policy to comment in more depth when the detailed application is made.

Also, the car sales premises on Sprotbrough Road have been the focus of local residents concerns. The number of vehicles on site and on the adjacent road has increased significantly, causing many problems for those living adjacent to the site including property access problems and noise nuisance from the associated car wash activity. Again, the parish council has supported local objections to the planning application made for this business, which had been operating without planning approval for many years. The owner, who had been operating from this location, has now moved to another site and a new proprietor is hoping to take over the site, subject to gaining appropriate planning consent by Doncaster Planning Authority.

Want to know about planning applications near you?

Doncaster Council's Planning Applications Online system, available on the authority's website, has a variety of methods to help you keep up to speed on developments in your area, including:

- Track the progress of planning / building regulation and appeal applications and be notified by email of changes or updates
- Save searches and be emailed about new applications in your area
- Search by key words in the description or address
- See weekly or monthly lists of applications received or decisions made within the system
- Submit comments about an application being considered
- View planning documents for valid applications after 1st Sept 2009
- View planning history
- View property details by reference to a map

Log on to www.doncaster.gov.uk/planningapplicationsonline

A councillor's 'wish list' for Sprotbrough & Cusworth

PARISH council vice chair, Coun Malcolm Wood, has made a number of proposals he would like to see incorporated into either a Neighbourhood Plan, the Green Infrastructure Plan or developed within our area by Doncaster Council and external partners as appropriate. Realistically, it's recognised that achieving some of the proposals would take a long time and not all of them may come to fruition:

Cusworth

A bowling green and tennis court in Cusworth Park, behind the large pond.
A cricket pitch in Cusworth Park (on land at the back of middle pond).
Keeper's Cottage - conservation listing and possible development for walkers using the Trans Pennine Trail.
Newlands Park - fitness/training equipment and a rugby pitch on parish council owned land.
Designated bridleway from Cusworth Village, adjacent to Keepers Cottage, running to the Trans Pennine Trail.
Public right of way from Newlands Park to the Trans Pennine Trail.
Public right of way from Wheatley Hills rugby ground (social club) to York Road industrial estate.
Public right of way from Ivanhoe Way (bus stop) to York Rd Industrial Estate.
Public right of way from Fernlea Close to the Trans Pennine Trail.
Public right of way from Newlands Drive to the Trans Pennine Trail.
Public right of way from Ferndale View to the Trans Pennine Trail.

Outside the Parish

Extend footpath No 5 to St Mary's Bridge

Sprotbrough

Nursery Lane - car park.
Boat Inn area - education/study centre.
Richmond Hill School - former caretaker's bungalow on the ex-Infants' school site to be earmarked for community use.
Disused quarry (rear of Ingleborough Drive) earmarked for public use/ woodland/coppice.
River Don - encourage wider use, such as recreation/river bus, with car parking at Marshgate and landing stage at Newton Lane/Don Gorge.
Public transport - circular link (small bus) from Doncaster town centre to Don Gorge/Warmsworth/Cusworth Hall on weekends and bank holidays.
St. Edmunds Church - conservation listing.
Newton Lane - light industry/housing/amenity use.
Sprotbrough railway station site - conservation listing.



Coun Malcolm Wood

Parish area generally

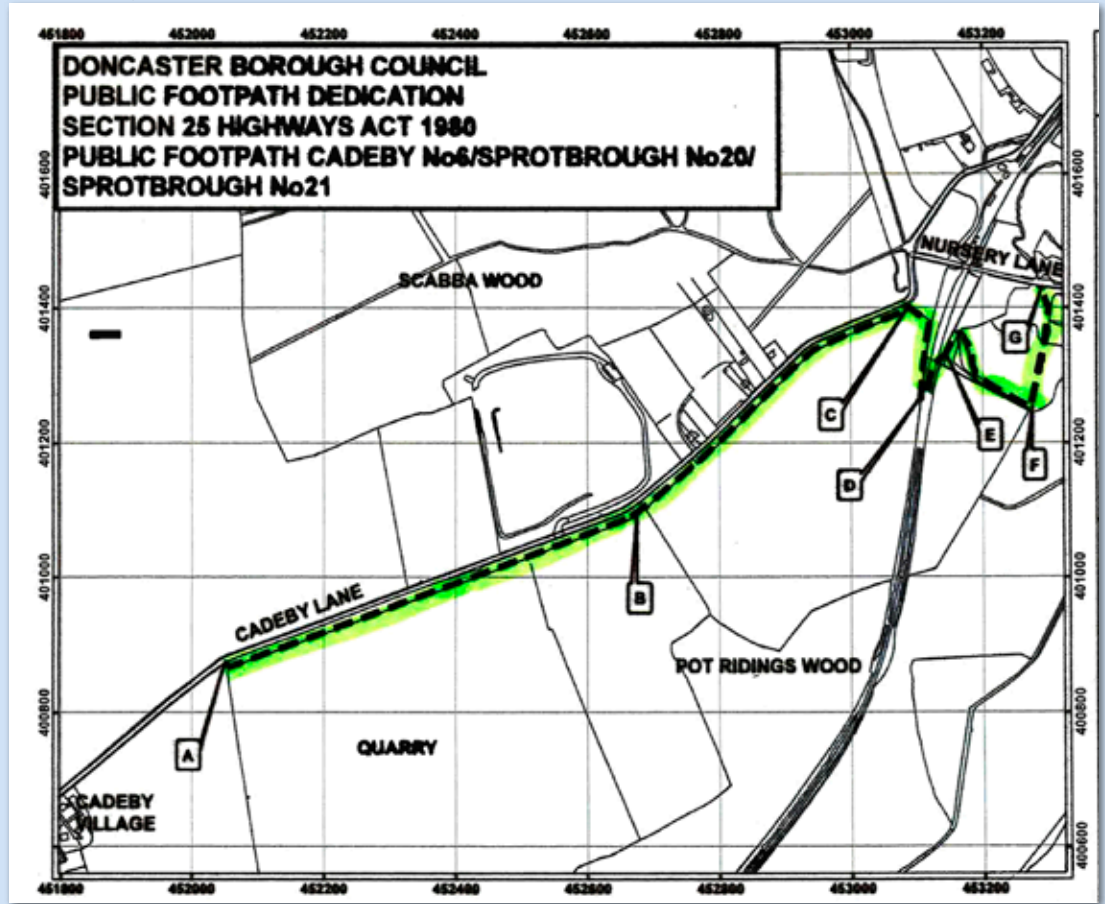
Green belt boundary to be maintained.
Doncaster Council to state the target number of houses to be built in the parish and over what timescale

New footpath to Cadeby

A NEW public footpath now links Sprotbrough to our neighbouring parish of Cadeby. The 1.8km long walk starts near the Boat Inn and travels alongside the quarry, parallel to Cadeby Lane as this map shows.

Doncaster Council have managed the legal aspects of creating the new public right of way, which joins together three footpaths - two in Sprotbrough parish and one in Cadeby. Quarry company Lafarge has been thanked for providing help and support to get the plans off the drawing board.

Sprotbrough & Cusworth Parish Council is currently reviewing all public footpaths in the parish.



HELPING HAND

A FISH pass is currently under construction on the River Don to enable salmon and other fresh water varieties to negotiate Sprotbrough Falls so they can reach breeding grounds upstream. The pass will house a number of elevated stages which allow the fish to gradually move up the gradient without having to contend with the fast flowing current which surges over the weir.

Construction vehicles are accessing the site via the A630 and a quarry on the south side of the Don. The work is expected to take 18 months.

Plans to construct a hydro-power unit alongside the fish pass were withdrawn.

Learn to dance like the stars at The Goldsmith Centre

New ballroom and Latin classes for adults and children taught by Stuart Barrett, Imperial Society of Teachers of Dance.

Adults Classes Monday 7pm - 8pm

**Do your kids love Strictly?
Children's Classes Monday 6pm - 7pm**

Get healthy, Get happy, get dancing!

Contact Stuart on **07795517876**
email info@doncasterdance.co.uk
www.doncasterdance.co.uk

Facebook: Doncaster Dance • Twitter: Doncaster_Dance

FRIENDS OF CUSWORTH PARK

If you're interested in finding out more about our local stately home, why not become a Friend of Cusworth Park?

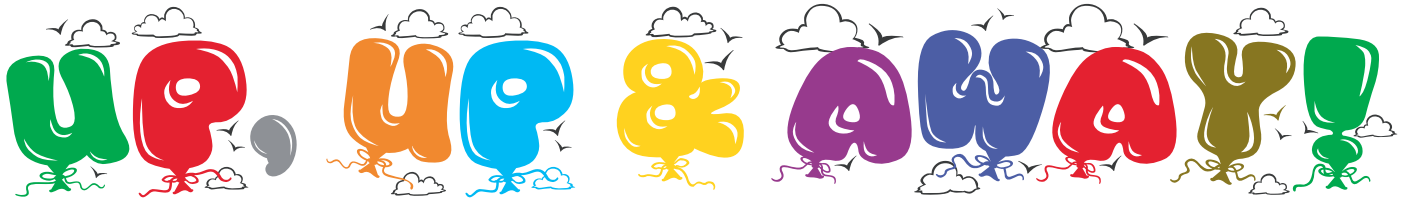
Cusworth Hall re-opened in 2007 following a multi-million-pound restoration project funded by The Heritage Lottery Fund. Since then, a new organisation has formed called the Friends of Cusworth Park, which provides invaluable support to the permanent gardening team.

The Friends have an interesting programme of talks, visits and demonstrations as well as organising events and fundraising activities.

Volunteers help with practical work in the gardens and assist with public tours. There is also a forum to contribute your ideas on how the Park can be preserved and improved.

New members are always welcome. If you would like to know more about the Friends of Cusworth Park please contact the secretary on 01302 782342.

SCHOOLS' PAGE !



PUPILS from Sprotbrough's Richmond Hill Primary School organised a balloon race to find out that maths can be fun.

To celebrate a school-wide Maths Day, the youngsters took part in a variety of activities and games and prepared a topic on balloon races. They worked out the distance balloons can travel, plotted their destination on a map and calculated how much money could be raised from such an event.

At the end of the day, parents joined the children in watching the balloon release.

Congratulations to Richmond Hill's School Council representatives 2013-14

Year 6	Yazzmin Shaw, Abigail Senior, Charlotte Hair, Patrick Edwards
Year 5	Tommy Dent, Lily Jones
Year 4	Hollie Gater, Brooke Close
Year 3	Cole Dawson, Madison Johnson
Year 2	Isabelle Tolley, Thomas Parkes

Enterprise Education

DONCASTER North MP Ed Miliband visited Ridgewood School to highlight the value of enterprise education and promote the work of Young Enterprise, the UK's leading enterprise education charity.

Under the charity's Company Programme, young people aged 15-19 set up and run a real firm for a year under the guidance of a business volunteer. They do everything from raising the initial share capital to designing and making their product or service to sell directly to customers at specially organised trade fairs and ultimately winding up the firm and paying their taxes.

Mr Miliband, pictured with pupils and Young Enterprise Chief Executive Michael Mercieca, said: "The work that Young Enterprise is doing shows that young people can really be inspired by enterprise, by the teamwork it involves, by coming up with their own ideas and selling them to people."

Headteacher Chris Hoyle said: "Young Enterprise gives students confidence in their personal skills and the way they approach work."



CHINA IN THEIR HANDS

SPROTBROUGH'S Copley Junior has been forging strong links with a school they have been 'twinned' with thousands of miles away in China.

The youngsters have produced a film of the school which they have sent to their counterparts at Zhongshanlu Primary in Dalian province. The next stage of the cultural exchange project will focus on how children and families from both countries live and spend their leisure time. Pupils at both schools have been preparing work on this theme, which will be exchanged as part of the learning process.

- TWO local charities - M25 and YMCA - benefited from food and toiletries donated by parents for the school's two 'colour' themed harvest festivals.

A level success

RIDGEWOOD School's first A level students achieved a 99.1 per cent pass rate in this year's summer examinations.

Some 16 per cent of them achieved either A or A* grades, and 51 per cent were rewarded with A* or B grades. Over 90 per cent of those going on to higher education are studying at places they initially chose, with others going through the universities and colleges clearing system.

The students' well-earned success has earned the school, which opened its Post-16 centre in 2011, a national grading of 'excellent'.

LOOKING BACK

Sprotbrough & Cusworth Parish News is 25 not out this year and we're celebrating with a look back down memory lane at some of the articles we've carried since 1988. This time we're focusing on 1997 to 2006.



- 1997 Sporting facilities in Sprotbrough were set to get a big boost thanks to the contents of our wheelie-bins. Cash from the Government's Landfill Tax would pay for one new basketball 'ring' and a hard-standing area to be sited on each of the parish council's four playing fields.
- 1998 Bus stops in the parish were the first in South Yorkshire to benefit from a pioneering screen system that told travellers how long they had to wait for the next bus.
- 1999 Work started on a new five mile long circular walk linking Sprotbrough and Cusworth, to mark the Millennium. A map of the route can be downloaded from our website: www.sc-pc.co.uk. The parish council also funded the cost of giving a specially designed mug to pupils at every primary school in the parish - 1000 in all.
- 2000 The parish council organised a public meeting to discuss proposals to create 72 new homes on the site of 'Burley's Yard', at Boat Lane, Sprotbrough.
- 2001 Sprotbrough welcomed a new GP, Dr Greg Connor, thanks to the parish council providing the land to build Park View Surgery, off Newton Lane. The former Astley Hall was demolished to make way for the impressive new building.
- 2002 Scawsby and Cusworth Community Appraisal Group distributed a questionnaire to local homes asking for people's views on key issues like health and public transport.
- 2003 A piece of Sprotbrough history that went missing for over 400 years was replaced. The new Millennium Cross was unveiled at Main Street, where it is believed a similar cross was erected some time before the 16th century.
- 2004 The parish council organised a public consultation on the Anchorage Lane playing field to discuss plans for a new skate park.
- 2005 The new skate/BMX park was unveiled and proved an instant hit with enthusiasts.
- 2006 Plans to turn waste land off Melton Road into a new community open space were made public by the parish council.

Preserving local landmarks

STRUCTURAL repairs have been carried out on a key river bridge, but there are still safety concerns according to a local action group.

Sprotbrough Preservation Association (SPA) has been monitoring the condition of the River Don bridge on Mill Lane for some time after metalwork on the sides started to protrude on to the adjacent footpath.

SPA wrote to Doncaster Council to highlight their concerns and were informed that major repairs were earmarked for the bridge, which is a listed structure. But parts of the bridge sides were still in a state of disrepair after the contractors moved offsite.

- SPA members are progressing their plans to mark the site of the former Copley Engine House, next to Sprotbrough lock. The current proposal, subject to gaining the landowner's permission, is to place a plaque on the site explaining the pump house's original function. The mechanism was designed to pump water 150' from the River Don to a tank on the roof of the former Sprotbrough Hall. From there, gravitational flow fed a fountain in the grounds of the hall and also supplied drinking water for Sprotbrough villagers via an outlet on Main Street.

Sprotbrough Music Society Concerts 2014

- Thurs 23 Jan - Syrinx flute and harp duo Holly Cook and Tamara Young
- Thurs 20 Feb - Timothy Orpen (clarinet) and Fiona Winning (viola) and John Reid piano
- Thurs 20 Mar - Lucy Hall (soprano) and Gavin Roberts (piano)

Concerts are held at St Mary's Church Hall, starting at 7.30pm. Contact the general secretary Ted Rimmington, on Doncaster 851269.

The Society has received financial support from Sprotbrough & Cusworth Parish Council.

Public welcome

SPROTBOUGH & Cusworth Parish Council meet on the third Thursday of the month at The Goldsmith Centre, with the exception of March and September, when the meeting is held at Scawsby Community Centre. No meeting is held in August. For more information visit : www.sc-pc.co.uk

WHO'S WHO ON YOUR PARISH COUNCIL

CENTRAL WARD COUNCILLORS

Coun Alan Smith (Conservative)
38 Melton Road, Sprotbrough, DN5 7NJ
Tel: 01302 785578



Coun Sarah Gallacher (Labour)
12 Chestnut Grove, Sprotbrough,
DN5 7RW • Tel: 01302 311186



CUSWORTH WARD COUNCILLORS

Coun Pat Haith Chair (Labour)
43 St Paul's Parade, Scawsby, DN5 8LJ
Tel: 01302 562015



Coun Jane Nightingale (Labour)
2 Sherwood Avenue, Scawsby,
Doncaster, DN5 8QH
Tel: 07801 532262



Coun Stephen Platt (Green)
39 Cusworth Lane, Cusworth, DN5 8JJ
Tel: 01302 782928



Coun Joanne Ward (Labour)
24 Canterbury Close, Scawsby, Doncaster,
DN5 8NR • Tel: 01302 561774



EAST WARD COUNCILLORS

Coun Lynnette Chipp (Green)
250 Sprotbrough Road, Sprotbrough,
DN5 8BY • Tel: 01302 785866



Coun Adrian Green (Labour)
15 Radcliffe Lane, Scawthorpe, Doncaster,
DN5 7XS • Tel: 01302 786892



Coun Peter Millar (Labour)
60 Hunt Lane, Bentley, Doncaster,
DN5 9SE



Coun Peter Gallacher (Labour)
12 Chestnut Grove, Sprotbrough, Doncaster
DN5 7RW • Tel: 01302 311186



Coun Malcolm Wood Vice Chair (Labour)
31 Ferndale View, Cusworth, Doncaster,
DN5 8HG • Tel: 01302 786864



PARK WARD COUNCILLORS

Coun Martin Greenhalgh (Conservative)
16 Park Avenue, Sprotbrough, Doncaster
DN5 7LW • Tel: 01302 564672



Coun Kerry Wood (Conservative)
23a Marlborough Road, Sprotbrough,
DN5 8HA • Tel: 01302 783043



STADIUM WARD COUNCILLOR

Coun Judith Rodgers (Labour)
46 Petersgate, Scawthorpe, Doncaster,
DN5 9JE • Tel: 01302 788864



STONECROSS WARD COUNCILLORS

Coun Allan Jones (Conservative)
38 Spring Lane, Sprotbrough, Doncaster,
DN5 7QG • Tel: 01302 858075



Coun Ray Bartlett (Conservative)
72a Spring Lane, Sprotbrough, Doncaster,
DN5 7QL • Tel: 01302 310575



OFFICERS

Anita Unsworth - Clerk to the Parish Council
Tom Hinds - Deputy Clerk
Ian Carpenter - Editor and webmaster

Sprotbrough & Cusworth Parish Council

Goldsmith Centre, 259 Sprotbrough Road, Sprotbrough,
DN5 8BP. Tel: 01302 788093 (Answerphone outside office hours)

Email: sprotcuspc@btconnect.com
Website: www.sc-pc.co.uk